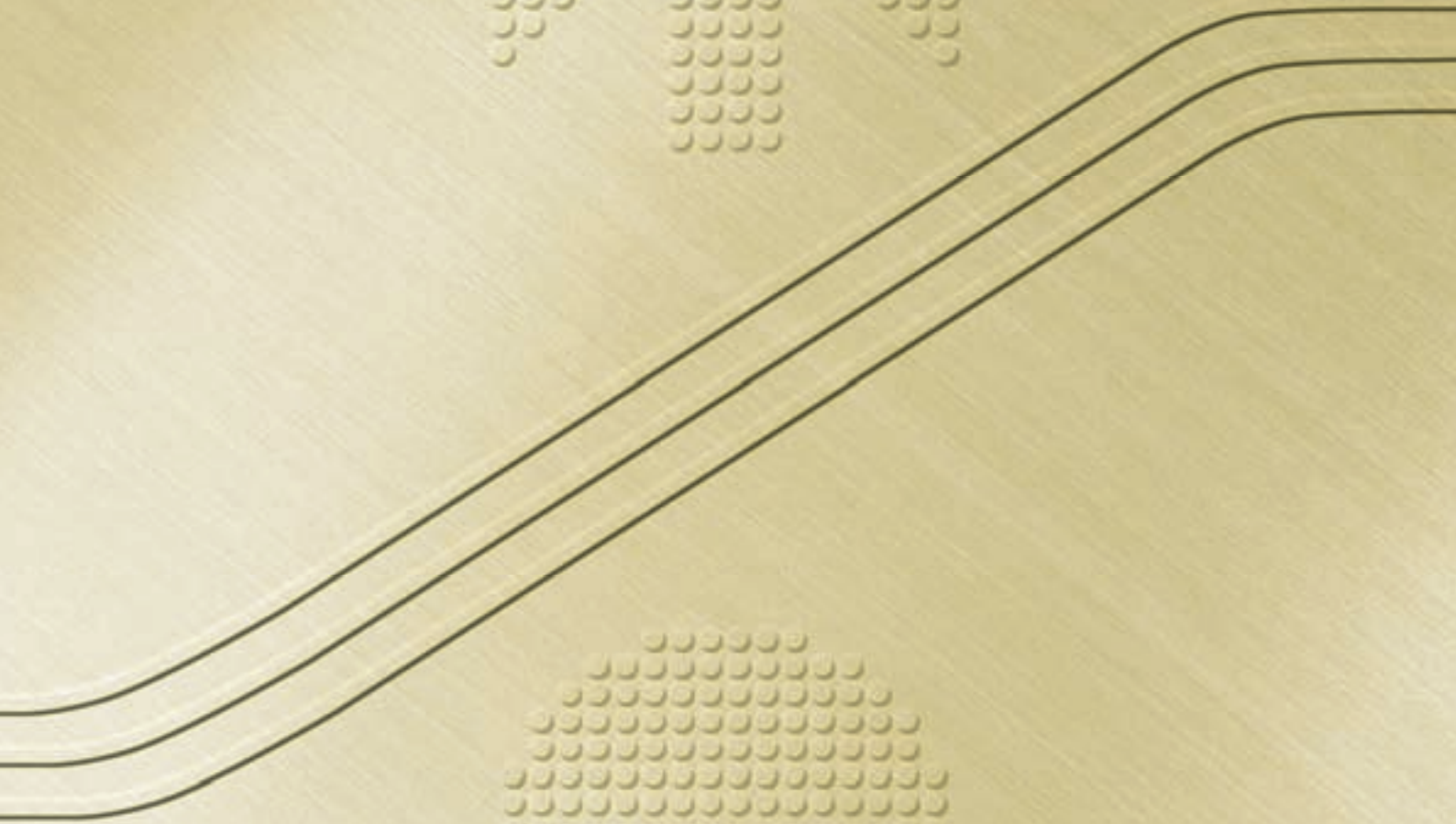


TOSHIBA

Leading Innovation >>>

TOSHIBA ESCALATOR Kindmover

<TE Series Escalator>



The New Escalators : “Kind” to passengers

The “Kindmover” escalator creates a new standard for escalators.

The “Kindmover” escalator incorporates numerous universal design features based on the concepts of “Kind to passengers and Kind to maintenance-persons” for the materialization of a new escalator that is both easy to use and easy to maintain.

POINT
1

ESNAVI

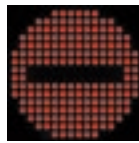
Escalator Operation Monitor for Passenger-Friendly Guidance (Option)



“Arrow signs” and “No entry symbols” displayed on the operation monitor indicate the escalator’s operation direction to the passengers and provide passenger-friendly guidance. Furthermore, when the activation of a safety device stops escalator operation, the location of the activated safety device is shown on the operation monitor so that the maintenance staff can find the problem as quickly as possible.



Operation direction



No entry



Information about the activation of the safety device



Movers and “Kind” to maintenance-persons!



POINT 2

Smart Deck Design no outwardly protruding screws



The advanced design uses no exposed screws for securing the section between the deck board and the skirt guard as a measure for preventing clothing from getting caught and other such problems.

D type

Deluxe type



*Skirt deflection device (Option)

POINT 3

Higher Inlet Position for Greater Clearance

Designed with the inlet in a higher position than conventional escalators in order to prevent objects from getting caught in the inlet.



POINT 4

Easier Access to Operation Panel

The operation panel, including the emergency stop button and key switch, is located nearer to the landing plate for easy and safe operation.



P type

Panel type



POINT 5

High Contrast Design Provides High-Visibility and Safety

The yellow color of the combs enhances the contrast against the black color of the steps and the landing plate, making it easy for the passengers to distinguish the moving steps from the stationary landing plate.

POINT 6

Safety Cleat System at the Landing

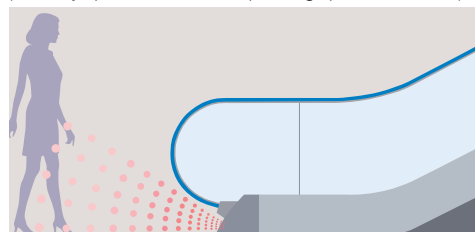
At the horizontal section of the landing, two steps engage and the gap between the steps is reduced so as to prevent objects from getting caught.

POINT 7

Poleless Automatic Operation (option)

A passenger detection sensor can be installed under the inlets instead of in sensor poles, rendering sensor poles and safety fences needless. In standby mode, the escalators are automatically shifted to a lower operation speed so that the passengers can recognize the current direction of operation.

(Standby speed: 10 m/min, Operating speed: 30 m/min)



Specifications

<Typical Specifications>

Type	S600	S800	S1000
Step Width	603mm	802mm	1002mm
Nominal Capacity (Passengers per hour)	4500	6750	9000
Speed	30m / min		
Inclination	30°/ 35°		
Power supply	For Main	AC 3-phase 380, 400, 415V-50/60 Hz	
	For Lighting	AC single-phase 220, 240V-50/60 Hz	

<Exterior Specifications>

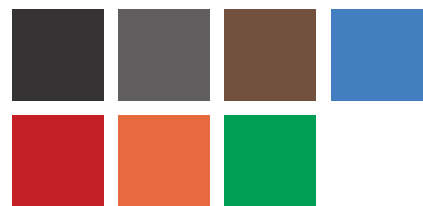
Type	S type	D type	P type	
Balustrade	Interior panel	Vertical flat tempered glass	Vertical flat tempered glass (with balustrade lighting)	Vertical stainless steel plate with hairline finish
	Deck board	Stainless steel plate with hairline finish		
	Skirt guard panel	Sheet steel with fluororesin coating (black)		
	Handrail	Synthetic rubber (Black)		
	Front skirting	Synthetic resin molding (Black)		
Step	Number of horizontal step	2 steps		
	Tread	Stainless steel (Black)		
	Created riser	Stainless steel (Black)		
	Demarcation line	Synthetic resin molding (Yellow)		
Landing	Comb	Synthetic resin molding (Yellow)		
	Landing plate	Stainless steel		

<Optional Specifications>

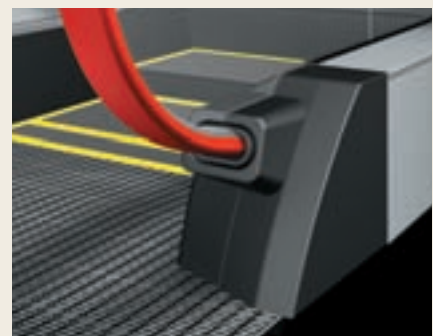
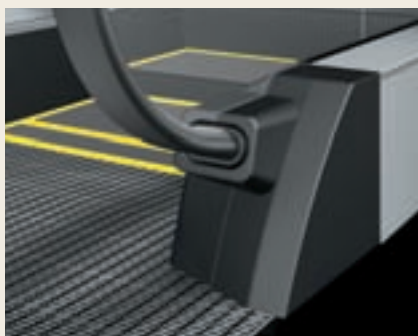
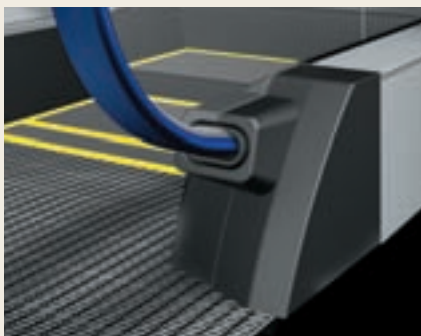
Balustrade	Skirt guard panel	Stainless steel plate with hairline finish
		Skirt deflection device (with brush)
Landing	Comb	Aluminium
	Step lighting	
	Newel Lighting (P type only)	
	Comb Lighting	
Safety device	Skirt guard safety device (Middle Position)	
	Auxiliary brake	
Function	ESNAVI (Escalator Operating Monitor)	
	Poleless automatic operation (Standby speed : 10m/min, Operating speed : 30m/min)	

Handrail (7 Color variations)

Select the most suitable color from among seven available color variations to match the building use and design concepts.



* Black color : Standard
* Other six colors : option



Work not included in the Installation Contract (costs for the following shall be borne by the customer)

1. Any structural work, such as opening floors to accommodate the escalators or the installation of necessary support beams.
2. Finishes to peripheral architecture after installation.
3. Pit waterproofing work.
4. Installation of handrails, fences or other safety features around the escalator.
5. Escalator truss exterior cladding work (Maximum load 123 N/m²); bottom illumination work. (Although not included within the scope of the standard installation contract, such customizations are possible upon request, at an additional cost.)
6. Installation of fire protection shutters, sprinklers and other building-safety features.
7. Building electrical work, such as the installation of main power cables, lighting cables, inspection power cables and grounding wires leading up to the escalator machine room.
8. Other peripheral wiring work, such as wiring to interlock escalator circuit with the fire shutter system (or other building safety systems), or wiring connections between escalator and various peripheral systems.
9. Worker locker room, materials stock yard, and other facilities necessary for the duration of the installation work.
10. Power supply, scaffolding, and other basic facilities necessary during installation and adjustment work.
11. Installation of wedge guard plates that are necessary where the escalators intersect with the ceiling, or wherever escalators intersect.
12. Any other architectural work, such as the installation of partitions or fences around landings.

Please provide us the following information when ordering or making inquires.

1. Name and address of your building.
2. Type of escalator to be installed.
3. The total number of floors and height of each floor where the escalators are to be installed.
4. The voltage and frequency of main power supply, along with the voltage and frequency of power supplies to be used for lighting inspection.
5. Desired color of the handrails.
6. Whether the truss requires exterior cladding work.
7. Whether bottom illumination work is necessary.
8. Whether the escalator circuit is to be interlocked with the fire protection system or other peripheral circuitry.



Safety Cautions

- Observance of relevant laws / regulations are required.
- Read the entire "Instruction Manual" carefully before use, for important information about safety, handling and operation.

TOSHIBA

TOSHIBA ELEVATOR AND BUILDING SYSTEMS CORPORATION

5-27, Kitashinagawa 6-chome, Shinagawa-ku,
Tokyo 141-0001 Japan
PHONE: +81-3-5423-3389 FAX: +81-3-5423-2746

• The data given in this catalog are subject to change without notice.

Printed in Japan

GK-F132(0)-07.05 2000-07.05(XW)